



Annotation:

Taking into account the implementation of facing 1520-8400005 and its alternative usage on tractors 1523.4, amendments were introduced into this assembly units and parts catalogue.

Changes introduced:

Group 84. Appearance (trim) package _____

Subgroup 8400. Facing _____

Pages 275a, 276a, 277a, 278a shall be introduced.

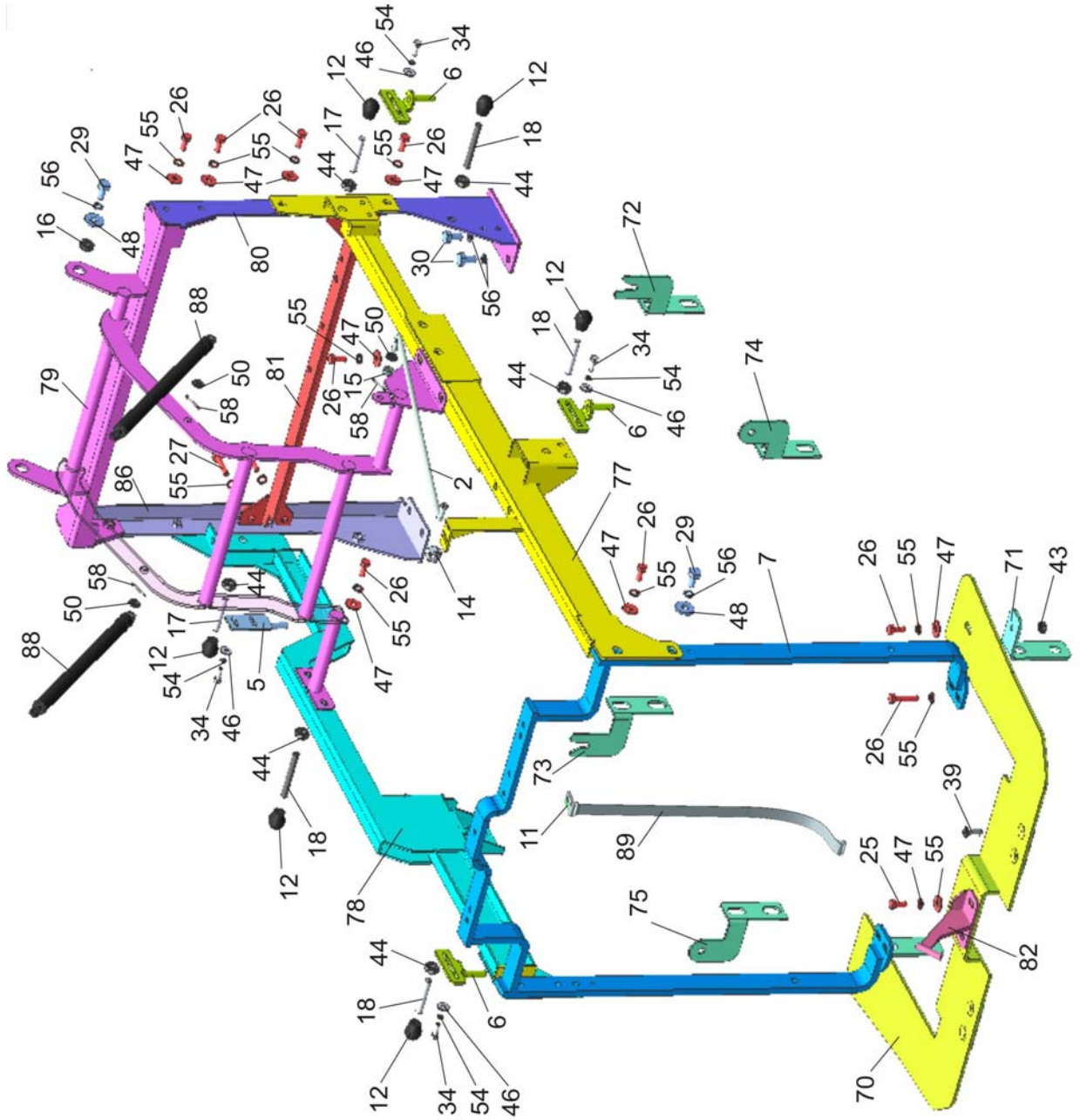


Figure 84.1(Page 1 of 2) - Facing

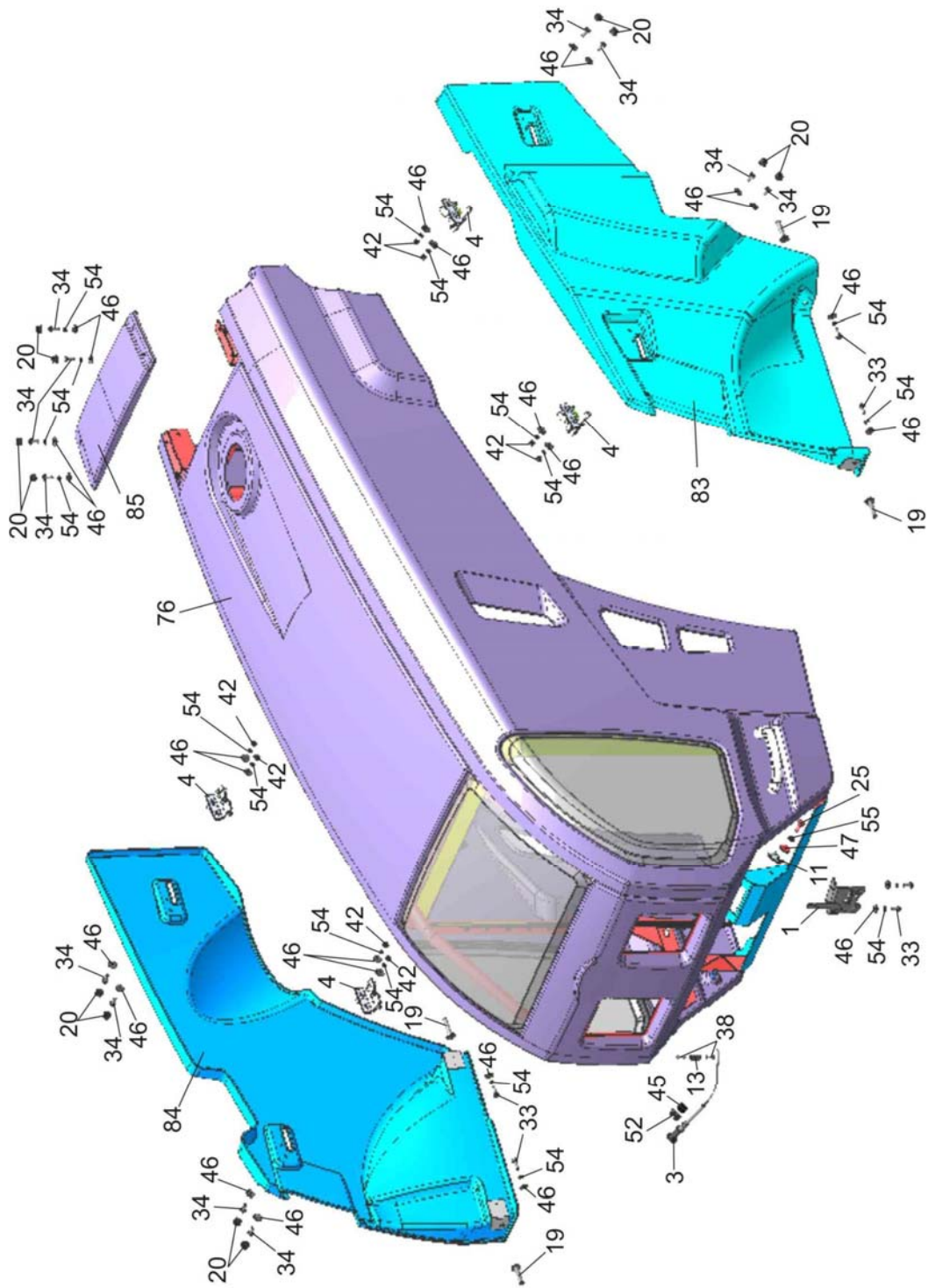


Figure 84.2(Page 1 of 2) – Facing



Group 84. Appearance (trim) package
Subgroup 8400. Facing

Fig. No	Pos. No.	Part No.	Q-ty	Name
84.1 84.2	1	80-8402410	1	Lock
	2	90-8400070	1	Link
	3	822-8400080-03	1	Control cable
	4	923-8402410-01	4	Lock
	5	950.1-8401070	1	Plate
	6	1321-8402095-Б	3	Lock pin
	7	1523-8402060-01	1	Arc
	11	70-1115012	2	Abutting collar
	12	70-3401093	6	Lever tip
	13	70-4803023	1	Coupling
	14	90-8400021	1	Clamp
	15	549A-1305044	1	Ring
	16	921.3-8400077	2	Bushing
	17	923-8400033	1	Rod
	18	923-8400033-04	5	Rod
	19	1520-8400012	4	Stop
	20	A30.04.017	12	Cap
	25	M8-6gx16.88.35.019	3	Bolt GOST 7796-70
	26	M8-6gx20.88.35.019	20	Bolt GOST 7796-70
	27	M8-6gx40.88.35.019	4	Bolt GOST7796-70
	29	M10-6gx25.88.35.019	4	Bolt GOST7796-70
	30	M10-6gx30.88.35.019	4	Bolt GOST7796-70
	33	M6-6gx16.88.35.019	6	Bolt GOST7798-70
	34	M6-6gx20.88.35.019	20	Bolt GOST7798-70
	39	B.M10-6gx20.58.019	4	Screw GOST 17475-80
	42	M6-6H.6.019	8	Nut GOST5915-70
	43	M8-6H.6.019	2	Nut GOST5915-70
	44	M10-6H.6.019	6	Nut GOST5915-70
	45	M12x1,25-6H.6.019	1	Nut GOST5915-70
	46	C 6.01.019	35	Washer GOST 6958-78
	47	C 8.01.019	19	Washer GOST 6958-78
	48	C 10.01.019	4	Washer GOST 6958-78
	50	C.8.01.019	5	Washer GOST 11371-78
	52	C.12.01.019	1	Washer GOST 11371-78
	53	C.16.01.019	8	Washer GOST 11371-78
	54	6T	26	Washer OST 37.001.115-75
	55	8T	27	Washer OST 37.001.115-75
	56	10 OT	8	Washer OST 37.001.115-75
	58	3,2x25.019	5	Split pin GOST 397-79
	70	1520-8400040	1	Plate
	71	1520-8400046	2	Bracket
	72	1520-8400047	1	Bracket
	73	1520-8400047-01	1	Bracket
	74	1520-8400048	1	Bracket



Group 84. Appearance (trim) package
Subgroup 8400. Facing

Fig. No	Pos. No.	Part No.		Q-ty	Name
84.1	75	1520-8400048-01		1	Bracket
84.2	76	1520-8402020		1	Hood
	77	1520-8402040		1	Buckle
	78	1520-8402045		1	Buckle
	79	1520-8402050		1	Frame
	80	1520-8402065		1	Stand
	81	1520-8402075		1	Plank
	82	1520-8402095		1	Lock pin
	83	1520-8402310		1	Side member
	84	1520-8402320		1	Side member
	85	1520-8402331		1	Hatch
	86	1520-8402070		1	Stand
	88	11.5.6308010		2	Gas spring TU RB 500032891.095-2003
	89	8400.056	Г502.00.000	1	Expedient belt